



# DRC 3 Digital Rotator Controller

A completely new design of DRC that allows you to control your 3501 or 3503 rotator from anywhere you have an internet connection.

The new system incorporates a DC drive motor and ramping feature that reduces wear on the rotator and allows for faster rotation of the antenna.

The system is field upgradable with existing 3501 and 3503 rotators so you are able to update the controls without changing the entire rotator.



## Operating Features

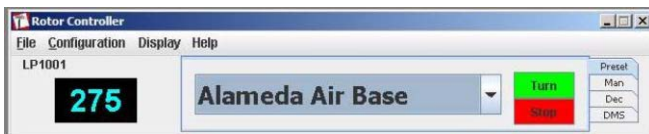
- 360 degree continuous rotation in either direction on both rotators.
- Manual Mode turns CCW or CW via buttons at the base of the antenna.
- Remote Control turns to a heading, or to 1 of many pre-selected locations.
- Headings are automatically calculated if needed by the Server.
- Up to 4 DRC 3 rotator systems can be connected to 1 Server.
- Up to 8 remote access users may connect and operate the rotators on 1 server at the same time.
- Remote access is user and password authenticated.
- Motor speed and soft start/stop is controlled by Pulse Width Modulating the drive motor at full peak voltage to ensure full torque at low speeds.

## DRC 3 Display

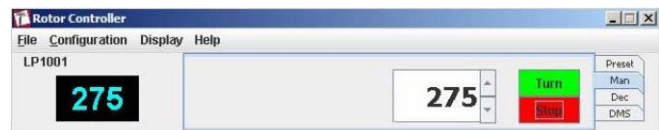


The LCD always displays the current heading, in degrees, and the operating MODE on the 1<sup>st</sup> line of the display. When the antenna is in motion, the top left of the display will indicate the direction with a left or right arrow (CCW or CW) and a two digit number that indicates the current speed of the motor.

## Controller Display Modes



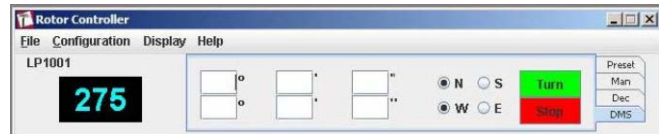
Preset



Manual Heading



Decimal Degrees



Degrees, Minutes, Seconds

The DRC 3 is mounted at the antenna tower. A shielded pair of wires is run from the DRC 3 into the radio control building to the modem we supply for your Windows/Vista based computer. There is no separate inside control box.

That computer is used to control the rotator, and if connected to the internet, the rotator can be controlled from any authorized computer that has the Controller software installed.

The DRC 3 is standard with the R2501 and R3503 rotators. The 3501 rotator now comes included with an N type rotary joint and mounting bracket for continuous rotation. The 3503 rotator is usually coupled with one of our large LP antennas and towers. Our 3002 towers come standard with a 1-5/8" EIA 25kW rotary joint.

If you are purchasing a DRC3 to replace your existing DRC1 or DRC2 system you will receive the following:

- DRC 3
- Safety Switch
- Rotary Sensor Assembly
- DC Motor
- Cables to connect all above items
- Server Software
- Controller Software
- V.21 Compatible Modem
- Installation and Operating Instructions

If you are upgrading a R3501 Rotator you will also receive:

- Rotary Joint with coax connectors
- Mounting Bracket for Rotary Joint