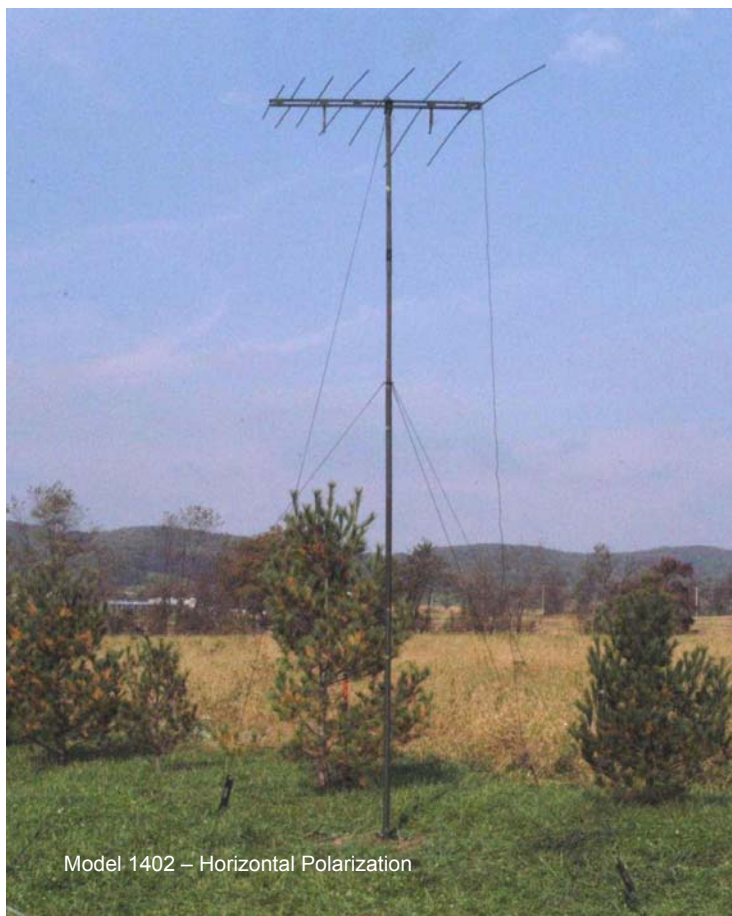
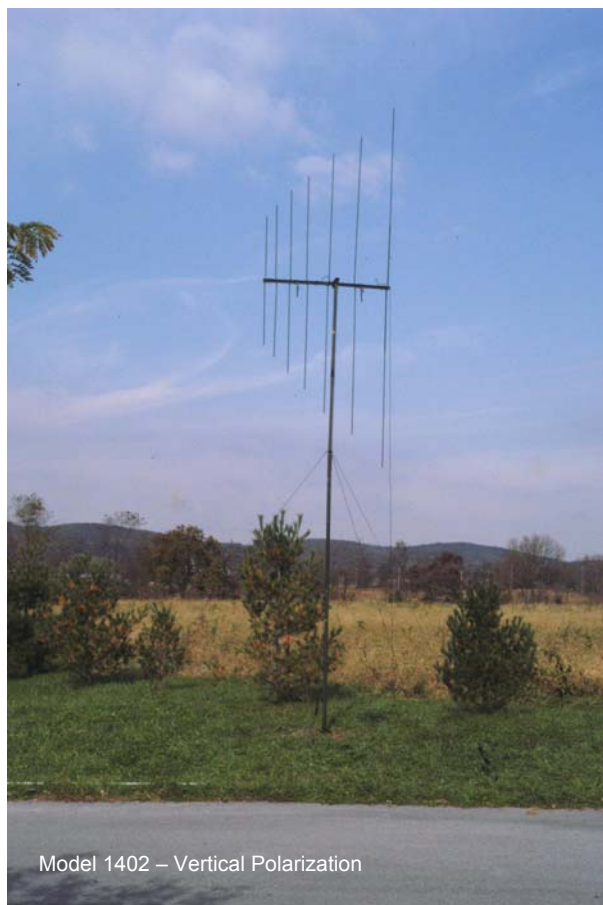




# MODELS 1402AC 1403AB

*LIGHTWEIGHT TRANSPORTABLE ANTENNAS  
HF BROADBAND*

*30-76 MHz OR 30-88 MHz*



Model LP-1402 and LP-1403 antenna systems are the ultimate in man-packed transportable antennas designed for broadband VHF tactical communications in the field. Their versatility and practical design are surpassed only by their rugged reliability. Supplied complete in a canvas pack. When erected, either system may be used for vertical or horizontal polarization at heights of 20 feet (6 m). In addition to their excellent electrical communications performance, human engineering factors have been emphasized in the design to provide an easily erectable, foolproof antenna system. Erection of either model is accomplished by 2 men in less than ten minutes.

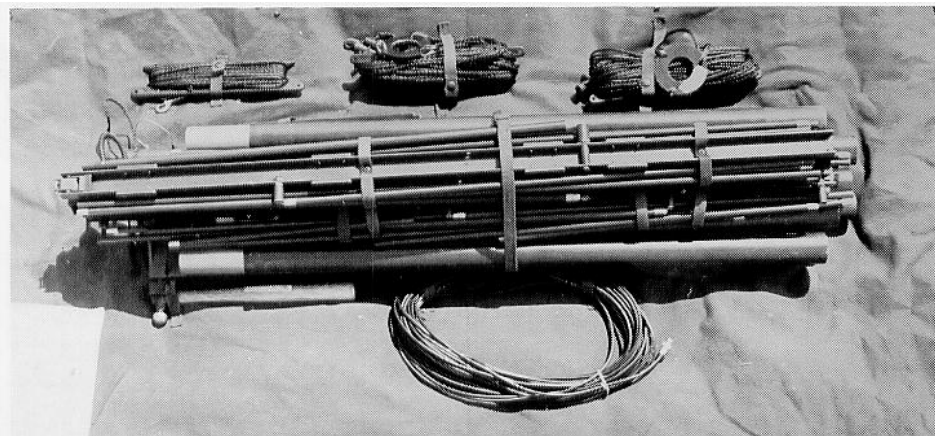
The top mast sections are made of fiberglass to enhance antenna operation in the vertical mode. Polarization of either antenna can be easily switched without lowering the antenna.

**United States Antenna Products, LLC 5263 Agro Drive Frederick, Maryland 21703 USA**  
Phone: 240-341-7120 Fax: 240-341-4980 [www.usantennaproducts.com](http://www.usantennaproducts.com)

## Specification Summary

| Model Number   | LP-1402                          | LP-1403                          |
|--|----------------------------------|----------------------------------|
| Military Nomenclature                                | AS2851/TR                        |                                  |
| National Stock Number                                | 5985-00-097-8802                 | 5985-01-441-5478                 |
| <b>Electrical Characteristics</b>                    |                                  |                                  |
| Frequency range                                      | 30.0-76.0 MHz                    | 30.0-88 MHz                      |
| Power handling capability<br>PEP/average             | 150 Watts/75 Watts               | 130/65 Watts                     |
| Polarization   | Horizontal or Vertical           | Horizontal or Vertical           |
| Nominal VSWR at 50 ohms*                             | 2:1                              | 2:1                              |
| Input impedance                                      | 50 Ω                             | 50 Ω                             |
| Input connector                                      | BNC                              | BNC                              |
| Forward Gain Over Average<br>Soil Conditions (in dB) | 4.5                              | 4.5                              |
| <b>Structural Characteristics</b>                    |                                  |                                  |
| Dielectric Support Pole Height                       | 20 ft. / 6.1 m                   | 20 ft. / 6.1 m                   |
| Wind Loading Capability:<br>No Ice                   | 60MPH (96km/h)                   | 60MPH (96km/h)                   |
| Radial Ice 0.25 (6.2mm)                              | 50MPH (80km/h)                   | 50MPH (80km/h)                   |
| Longest Element                                      | 16' 8" (5.1 m)                   | 15'6" (4.72 m)                   |
| Total Number of Elements                             | 7                                | 8                                |
| Boom Length  | 6' (1.8 m)                       | 8' (2.3 m)                       |
| Net weight   | 36 lbs / 16.3 kg                 | 37 lbs / 16.8 kg                 |
| Shipping weight                                      | 39 lbs / 17.7 kg                 | 40 lbs / 18.4 kg                 |
| Erection Time  | 2 people<br>Less than 10 minutes | 2 people<br>Less than 10 minutes |

\*VSWR depends upon the height of the antenna above ground, and the influence of other structures or antennas in the vicinity. The specification is for ideal conditions.



**LP-1402**  
**LP-1403**

**30-76 MHz**  
**30-88 MHz**